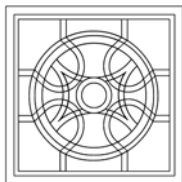
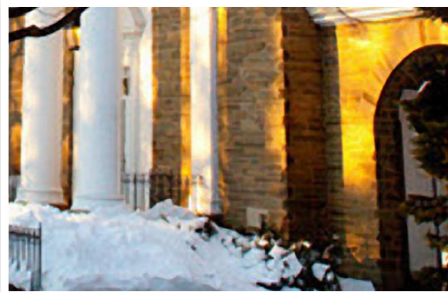
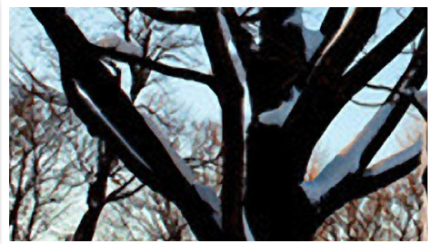
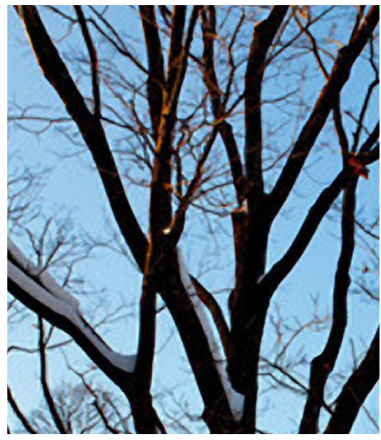
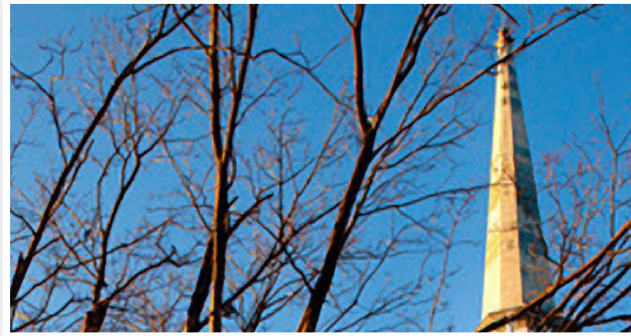


# THE PRESBYTERIAN CHURCH OF CHESTNUT HILL



*Annual Report 2016*



## Cindy's Reflections on 2016

Some of the details of this year are floating in my memory; others are written on my heart; and fortunately for this report, the things I actually did or the places where I showed up

are still scribbled on my Presbyterian program calendar. Brian may have gotten me on Facebook, but he has not convinced me to abandon my paper calendar!

The rhythm of my life in ministry remains the same:

- ❖ Preparation for and teaching the lectionary texts to the faithful and fearless members who have gathered for years to study the Bible on Wednesday morning;

- ❖ Friday morning until Saturday night spent at home writing a sermon; Sunday morning preaching and sometimes teaching.

- ❖ More than ever, thanks to Ken, I tell time by the seasons of the church's year, from Advent to Christmas, from Epiphany to Lent, from Easter through Ordinary Time to Pentecost back to Ordinary Time, from All Saints' to Christ the King Sunday.

- ❖ More than anything else, I love to tell the story, to wrestle with its meaning, and to be changed, surprised, and chastened in the process.

- ❖ Then there are the meetings that dot every month:

- ❖ For PCCH there is session, nominations, social witness, church life, finance and budget, investments, stewardship, legacy and personnel for PCCH.

- ❖ For the Presbytery of Philadelphia, I served on a Young Adult Volunteers task force, hoping that we would be a site for YAVs dealing with the school to prison pipeline, but the YAV program was put on hold by the General Assembly; I continue as a trustee of the Presbytery; I edited the 300th Anniversary Devotional book for the Presbytery (and almost lost my religion doing it!);

- ❖ For the General Assembly, I was elected to be a commissioner at the General Assembly in Portland, Oregon and then asked to be vice moderator of The Way Forward Committee (an assignment that kind of torpedoed my vacation time); I continued to represent our church on the board of Lebanese American University that meets twice a year (and will meet in Lebanon this spring!) and chair the Academic Affairs Committee.

- ❖ For the community, I am also a member of the board and executive committee of the Interfaith Center of Greater Philadelphia as well as continuing to participate in Jewish-Christian dialogue through a program at St. Joseph's.

- ❖ For my soul, I am thrilled to be a member of The Crossing board which meets monthly at our church.

- ❖ If God calls you to be a Presbyterian minister, you should know that a lot of your one, precious, unrepeatable life will be spent in committee meetings. That said, it is a privilege to work with all of you who add church commitments to the incredibly busy lives you are already leading.

- ❖ Always on the calendar I stop at the names next to hours in the day when

- ❖ We gathered to give thanks to God for one among us who is now in the church triumphant;

- ❖ Or a home visit in preparation for a baptism;

- ❖ Or a trip to one of a multitude of hospitals;

- ❖ Or pre-marital counseling sessions and rehearsals and weddings;

- ❖ Or knocking on the door of potential new members; or an evening spent (especially in the summer) with a member or a family for dinner.

The humbling opportunity to be invited into your lives at the moments of great joy or unbearable sorrow or even the ordinary moments at the kitchen table are worth my life. Boundaries be damned, you are family to me and have upheld me and prayed for me in a year when I was dealing with aging parents, bumps in the road for my brother's family and the dying of two close friends.

Speaking of family, another part of most every week is staff meeting that begins in Brian's office at 10:30 a.m. on Tuesdays and often continues at CinCin over lunch. I LOVE THIS STAFF!!!! I do not know if you realize what an incredible group of deeply committed people give

200% week in and week out to make us be the church we have been called by God to be. Staff takes more time than you might imagine, but it is time spent building (sometimes mending) relationships so that together we bear witness to the oneness of the body in everything we do.

Thank you for the gift of yet another year when, looking back, I can't believe I get paid to do what I do and be who I am with you.

*Cindy Jarvis*





## *Youth Ministries, Senior Ministries and Adult Fellowship*

### **Theology on Tap:**

Since 2009 our numbers at Theology on Tap have grown from 4 on average to 12. We once had a high of 26, which admittedly, was too much of a good thing. We meet once a month from September through May in the Upper Room at Campbell's Place on Germantown Avenue. We talk, debate and weave our way through conversations on War and Religion; The Modern Christian Family; Bio-Medical Ethics; and other important debates. This group has functioned as a gateway for new members to meet others in the congregation in an informal location yet over serious discourse.

### **High School Youth Group:**

The 2009 Youth Mission Trip was cancelled on account of having only 2 interested teenagers; additionally the 2009 Youth Group averaged 6 in attendance. Comparatively, the 2016 Mission Trip to South Dakota featured 19 youth and had 24 in total; and the 2017 Mission Trip figures to push near 30. Over the last several years the Youth Program has not only grown in number but also in outreach. We have recently partnered with West Kensington Ministry – our youth have joined theirs in worship, as well as in three dates of community service. We have also volunteered with Habitat for Humanity and will continue to do so over the next several months. In house, you might find us eating pizza or painting murals, but you'll also occasionally see us at the Retirement Homes on Senior Adult Visits and annually in Widener Hall as we serve the entire congregation the best plate of Spaghetti and Meatballs your capital gains can buy. Moreover, we initiated a new and

exciting group a year ago that meets under the moniker: Theology and Pretzels. Mirroring the format of the more-adult Theology on Tap, we meet once a month for brunch and discuss and debate current events, especially as they relate to the understanding of our faith and spirituality.

### **Junior High Youth Group:**

Like their older brethren, the Jr. High Youth Group travels to West Kensington for worship and service and occasionally joins Brian on Senior Adult Visits. They are known to play high-energy games such as Manhunt and Dodgeball, followed by brief yet substantive conversations on scripture and its relevance in young life in 2016-2017. They are key contributors in helping to organize the Warmth Drive; and two of the last four preachers for Youth Sunday came from the 8th grade.

*Brian Russo*

## *Children and Families Ministries*

“When a stranger sojourns with you in your land, you shall not do him wrong. You shall treat the stranger who sojourns with you as the native among you, and you shall love him as yourself, for you were strangers in the land of Egypt: I am the LORD your God” (Leviticus 19:33-34)

“I’ve never before had a positive experience within the walls of a church,” confessed a twenty-something-year-old participant in last October’s Harry Potter Festival. She was propped against the wall of Widener Hall as volunteers were making their way through the room offering second slices of pizza. Every available seat had been taken. Children filled the space on the floor as everyone watched Harry Potter and the Sorcerer’s



Stone beneath the glow of hanging lights. Our guest's comment struck me as a sad reminder that the church throughout time and space has not always welcomed all people. But it was also a sign of hope: that the welcome this young woman had received—a welcome into an overcrowded fellowship hall which reeked of pizza—was enough to overwhelm and surprise her in a positive way. When I reflect on the ministry we've done together in the last year, particularly the many firsts that have taken place among us, the young woman's comment stands out as one of our better moments. It was a moment of radical hospitality and gratitude.

More than fifty volunteers welcomed over a thousand people into the walls of our church building over the Harry Potter Festival weekend, offering them food, rest, public restrooms, warmth, and a chance to see that the church can have fun, too. Likewise, last August, more than forty volunteers welcomed fifty



children (and their parents) to our first Bible, Music, and Art Camp—during which the children learned Bible stories of God's love for creation, built and planted a raised bed garden, created art and music, played games, enjoyed lunch, and donated books to schools in Fiji that were devastated by a cyclone.

Each month we're welcoming 35-45 people—from the very young (3 months!) to the very wise—to Dinner Church in Burleigh Cruikshank Chapel, where we all celebrate God's radical hospitality in inviting us to feast together at the Table. And each week we welcome a growing number of children to Church School and Church School Sings, in hopes that they might learn to remember who they are and Whose they are.

I offer a prayer of thanksgiving for all the volunteers who have embodied the welcome of this church, who have offered hospitality with reckless abandon, and who continue to teach and shepherd our children that they might grow to extend welcoming arms to the strangers among us. Thanks be to God!

*Austin Crenshaw Shelley*



## Music

The church continues to maintain a vital presence in Philadelphia's cultural world, with the Gallery Choir at the center of the music program. The choir, a combination of 8 professionals and 21 volunteers, continues to attract new singers to the church from neighboring congregations, local universities, and the greater Chestnut Hill community. PCCH serves as the home to many area ensembles, including the Grammy nominated choir The Crossing, Piffaro, Tempesta di Mare, and the Pennsylvania Girlchoir. Additional guest ensembles performing at the church this year include the Duquesne University Voices of Spirit, Westminster College Choir, and the Chestnut Hill Singers.

The Cantatas and Chamber Music Series, now in its fourth season, offers professional concerts by our singers in the elegant and intimate Burleigh Cruikshank Memorial Chapel. The renovated Chapel, which has become a sought-after performance and community space, also hosts a number of recitals and chamber concerts throughout the season.



The Festival of Music and Arts took place during the weekend of November 4-6, featuring a play reading, a performance by the Gallery choir, and an opening reception for the beautiful art show displayed in Widener Hall. Stay tuned for information about the 2017 Festival, which will feature a multi-discipline collaboration with Heeding God's Call to End Gun Violence.

*Dan Spratlan and Ken Lovett*

## Administrator's 2016 Report

The projects of 2016 were exciting, rewarding and satisfying as we completed the remainder of the approved Capital Campaign items: the removal of the old boiler system, the exterior painting of the entire facility, and the concrete driveway repairs. There were challenging projects that included working with the Presbytery to defend the churches non-profit status with the City of Philadelphia, replacing the main computer server, and changing all of our bank accounts to a new bank for reduced fees.



That work and all of our PCCH accomplishments are possible because of the generous gift of stewardship and time from everyone at PCCH especially those on Session, the Capital Campaign, Finance and Hospitality.

We are grateful for long standing relationships with our resident music groups: The Crossing Choir, Piffaro, Tempesta di Mare, The Pennsylvania GirlChoir, Philomusica and other members of the PCCH family: Scouting Troop 221, The Chestnut Hill Rotary, The Outdoor Gardeners, The Mt. Airy Learning Tree, Monday evening Yoga, Penn Medicine Mindfulness, The Swing Dance Society and many others.

It is an honor and privilege to work with a staff that is as dedicated, talented and inspirational as PCCH's. Please take a moment to give great thanks especially for Evelyn Carpenter, Leslie Lefer, Felix Delgado, Owintier Charles, Debbie Lambeth, Icilda James, Joan Foster and her support staff.

With deep thanks for your trust and support,

*Jo Ann West*



## Center on the Hill

The Center on the Hill, the place for active adults at PCCH, provides a variety of programs, activities, and resources to enrich the lives of seniors in the greater Chestnut Hill area. This past year has been a year of tremendous growth in the number of course offerings as well as the number of participants at the Center. In addition to our weekly classes like Golden Yoga, T'ai Chi, Soul Line Dancing, Folk Dancing, Zumba Gold, Super Bones and bridge play, local seniors enjoyed:

- ❖ Afternoon movies
- ❖ Mindfulness and meditation series
- ❖ Health and wellness lectures
- ❖ Dementia awareness programs
- ❖ A program on the Tuskegee Airmen
- ❖ A Senior Crime Prevention Program
- ❖ Two Dessert with a Docent programs featuring a docent from the Philadelphia Museum of Art
  - ❖ From Phantom to Hamilton: A Look Behind and Beyond the Curtain
  - ❖ Introductory Hebrew (led by our own Austin Crenshaw Shelley)
  - ❖ Trips (using our church van) to Chanticleer Gardens, the Constitution Center, the Brandywine River Museum, Nemours Mansion and Garden, Grounds for Sculpture and the Pennsylvania Academy of Fine Arts to name a few.
  - ❖ And much more.

Our Speaker Series on the Hill (formerly the Men's Luncheon) series continues to be a successful monthly (September – May) event for PCCH members and the surrounding community. Under the capable hands of Stan Elwell and John Lawton, the Speaker Series on the Hill has invited thought-provoking speakers such as William Agate (Philadelphia Navy Yard), Rev. Bill Golderer (Broad Street Ministries), Chris Brennan (The Philadelphia Inquirer), and of course Chris Wheeler of the Philadelphia Phillies. Our 2017 speakers are sure to not disappoint.

We continued to engage in intergenerational programming and our partnership with the PCCH Preschool. With the help of Pat Dennis, Director of the Preschool, seniors from the Center on the Hill worked with the preschoolers to create their Mother's Day gift. Each child planted an herb or flower to take home to Mom on her special day.

In 2016, the Center on the Hill implemented two very

## PCCH Preschool: State of the School

The Preschool is enjoying another blessed year. Our rooms are filled with active, happy children who are eager to learn and teachers who are committed to offering a fun and innovative curriculum.



This year we are pleased to have a brand new website which not only provides information about our school and programs, but allows parents to fill out forms online and submit them from the site. We updated our logo to a bright blue and white and, of course, our giraffe.

We started an enrichment program for children who stay until 3pm that emphasizes science and math. It has been a great success. The work they do is fabulous!

Our children continue to partner with the Center on the Hill and Leslie Lefer. This year we created snack bags for Meals on Wheels in honor of Martin Luther King, Jr Day.

We continue to offer a variety of program options to keep up with the changing needs of our families. We welcome all children throughout the school year and look forward to another successful camp in May.



*Patricia Dennis*



timely and important projects. The first was our panel discussion *Being Mortal: Facing the Hard Questions at the End of Our Lives and the Lives We Love* based on Atul Gawande's book titled *Being Mortal*. This discussion was a huge success with over a hundred in attendance with lots of thoughtful questions. Memory Cafés were also an important addition to the Center on the Hill programming this year. Spurred by an article about the University of Pennsylvania's Memory Cafés (given to me by one of my seniors), two grants were written both of which were funded. Memory Cafés are a European innovation that is slowly taking hold in the U.S. It provides a safe, comfortable, and supportive environment for people with dementia and their caregivers to socialize as well as offering a range of fun and engaging activities. In 2016, we held four cafés which included live music, art therapy and pet therapy. Our next Memory Café is scheduled for April 2017 in which we will have time to socialize and enjoy some physical movement led by a local recreation therapist and movement expert.

Last but definitely not least, the Center on the Hill facilitated its first letter writing fundraising campaign. Each person on the Center on the Hill paper and electronic mailing list, as well as PCCH members, were written a letter asking for them to consider supporting our presence in this community and helping us to fulfill our vision of offering more and more quality programming and of welcoming more and more people to "the place for active adults". Much to our delight, the response was overwhelming. This fundraiser brought in almost \$11,500. Not bad for our first time!!

Seniors who come through our doors continue to impress me with their dedication to improving their health and wellbeing and their willingness to learn something new. They're a true inspiration. I feel truly blessed to serve our seniors. I also feel extremely fortunate to work with such a talented, compassionate and passionate set of staff here at PCCH.

*Leslie Lefer*

# The Session

## Class of 2017

Mark Bernstein  
Robert Greer  
Elise Hocking  
Kristin Lawton  
Anna McClafferty  
Laurie Menyo  
Matthew Ward

## Class of 2018

Emily Camp-Landis  
Katherine Connelly  
Landon Jones  
C. Thomas McClintic  
Daniel Pretz  
Kevin Raphael  
Dominick Rebeck  
Anne Standley

## Class of 2019

Bradley Kim Kern  
Melissa Montgomery  
Jeffrey Podraza  
Margaret Poteet  
Taylor Slaughter  
Harry M. Spaeth  
James Walker  
Julianne Watson



## PCCH New Members 2016

John and Laura Beeghley  
Clayton Boulware  
Andrew and Janice Browne  
Ryan and Shannon Cavanaugh  
Jonathan and Sara Eastman  
Kate Houstoun  
George and Anne Lyons  
Linda Pettengill  
Deborah Robinson  
Susan Rooks  
Edna Russo  
Donald Todd  
Beth Vaccaro

## PCCH Baptisms 2016

Ava Bermudez  
Bruce Edward Beyer  
Jack Decktor  
Madeline Dickinson  
Seth Russo  
Brady Stecker

## PCCH Member Deaths 2016

Elizabeth Davies  
Hope Dyer  
Jean Elliott  
Margaret Keeler  
M. Michael Marian  
Peter Mattoon  
Jean Mayson  
David Nation  
James Sauers  
Jane Wheeler



## Session Highlights 2016

❖ Sent a letter to the Al Aqsa Islamic Society expressing sorrow, outrage and support in the aftermath of a pig's head being left at the entrance to their mosque.

❖ Established a task force to address the drop in pre-school enrollment (which, along with the tireless efforts of school head Pat Dennis, resulted in full enrollment by December 2016!) and to carry the school's deficit of \$49,000.

❖ Approved the 2016 operating budget of \$946,000 and voted to delay the "mini" capital campaign that was under consideration for the spring of 2016 due to general financial uncertainty.

❖ Held a session retreat in April led by Bob Jaeger, Director of Partners for Sacred Places. The session did an assessment of our use of space, the value of our space to the community. They then brainstormed on how to use the very few underused spaces, including the second floor of Strouse and the front lawn.

❖ Approved disbursement of \$62,250 of capital mission grants to Whosoever Gospel Mission, One House at a Time, West Kensington Ministry, Broad Street Ministry, Roxborough Presbyterian Church, Philadelphia Interfaith Hospitality Network and the Common Place, thus completing the distribution of the Strengthen the Foundation/Transform the Future mission tithe.

❖ Approved a new document describing our endowment funds and expressed great appreciation to Harry Spaeth for his tireless work on this document and on the reorganization of funds that preceded it.

❖ Received a report about joining a coalition of faith communities that will be sponsoring a Syrian student who has been accepted at LaSalle University.

❖ Commended Austin for initiating a wildly successful weekend as part of the Chestnut Hill Harry Potter Festival, raising just under \$7000 for mission.

❖ Voted to conduct an audit for 2017 in 2018 and to send out a Request for Proposal to four firms.

❖ Heard a report from staff about the success of the first Dinner Church that will now be held the last Sunday of each month during the program year in Cruikshank Chapel.

❖ Examined and unanimously approved Margaret Pooteet as an Inquirer, the first step in the PC(USA) toward becoming an ordained Minister of Word and Sacrament. Margaret will attend Princeton Theological Seminary.

*Katie Connelly, Acting Clerk of Session*

## Deacon's Report



As stated in the book of order, "The office of Deacon, as set forth in Scripture is one of sympathy, witness, and service after the example of Jesus Christ."

Currently the Presbyterian Church of Chestnut Hill has 22 Deacons who are led by Brian Russo, Director of Youth and Senior Adults. Each Deacon is assigned to church members over 85 years old whom they visit several times during the year. They deliver flowers to recognize birthdays and for Christmas and Easter. Brian provides insight and guidance regarding members who may need particular support in some way.

In addition, the Deacons support families with newborns, those who have lost a loved one, and visit the sick. They also are available for those who may need transportation to and from Sunday service.

The Deacons are the friendly faces who greet members and guests at the lower level rear entrance to the church on Sundays. And, they assist with providing half & half for coffee hour.

One of the Deacons most popular activities is the Deacon's Brunch which takes place annually in January. The entire group is involved in preparing for this event and making it a great success each year, attended by a large number of the church family.

*Elsbeth Wrigley*

## Church Life

The Church Life Committee continues its commitment to encourage and welcome visitors, increase church membership and the life and liveliness of our church

family, and nurture and involve current members.

The committee also continues to explore how and why visitors to our church become members, and is expanding our social media and communications efforts to attract visitors and support them through their membership journey. We seek to create a welcoming environment, greeting visitors after worship and at Second Hour on Sunday morning and following up with them after their initial visits, and looking at the best way to integrate them into the life of our church.

In October, with the help of Session members, staff and congregation members, the committee staffed a booth at the annual Chestnut Hill Fall for the Arts Festival. We featured the church's many music, arts and children's education opportunities as well as the programs offered by the Center on the Hill.

We have also begun this year to organize events that will attract members and their families, such as the August visit to the new Mormon Temple in Philadelphia (followed by dinner) and the December outing to Stagecrafters to see the play "Clybourne Park," which tied into our church's continuing conversation on race, privilege, and reconciliation. Mark your calendars for the first Saturday in May, as we will revive the famous Kentucky Derby party!

We thank everyone who helps to create and maintain a welcoming environment at PCCH, and we encourage your thoughts and comments relative to activities and programs of interest to you and your family!

*Jeff Podraza*



## Social Witness

In 2016 the Social Witness Committee led our congregation in mission work to feed the hungry, shelter the homeless, witness the loss of lives to gun violence,



bring joy to children in poverty, welcome refugees, provide a safe harbor for victims of domestic violence, educate children, free the innocent, and so much more. For instance, our congregation...

Gave \$2,000 to the youth-founded and -guided Northern Youth Project to better the outcomes and opportunities for rural Northern New Mexico youth... Over ten months, served nearly 1000 sloppy joe meals prepared by our congregation to the residents of Our Brother's Place emergency shelter... Gave \$7,500 to Broad Street Ministry to further their radical hospitality approach to ministry and witness... At Christmas, shared grin-inspiring gifts with 25 children who were guests of ACHIEVEability's transitional housing program for homeless families... On our lawn in December and January, hosted the Memorial to the Lost of Heeding God's Call to End Gun violence, dedicated to the 26 lives lost to gun violence in the Sandy Hook Elementary School massacre four years ago... Gave \$3,000 to Centurion Ministries for their work leading to the vindication of the wrongly convicted and on death row... Wrote to the faithful at the Al-Aqsa Islamic Society to express our solidarity with them and our sadness at the hate crime they experienced... Over two separate weeks, cooked and shared meals with 6 homeless families who were guests of Philadelphia



Interfaith Hospitality Network... Gave \$5,000 to Dawn's Place to improve the lives of women who have been victimized by commercial sexual exploitation... Joined and participated in a faith coalition created to support a young Syrian woman coming to LaSalle University from a refugee camp in Turkey... Gave \$12,000 to German-

town Avenue Crisis Ministry to support our neighbors in need in Germantown... Donated 55 backpacks chock full of school supplies for pre-K and kindergarten-age children known to PIHN... Joined with the Adult Education Committee to develop the Religion, Race, and Reconciliation activities in the fall... And gave, did, and inspired many more things to witness God's love of each and every person!

*Emily Camp-Landis*

## Adult Education

2016 saw the creation of a new committee in the life of our church, and it has been a wonderful first few months for the Adult Education Committee! Charged with the task of working with our pastors to provide for educational opportunities for adults and to tend to the spiritual growth and formation of our whole family of faith, we busily met over the summer to plan out the fall slate of adult education opportunities.



During the fall, we began to look more closely at the problem of racism, how it has been a force both in our country and in the church, and what the Body of Christ's response should be to that force. Collaborating with the Social Witness Committee, there were several opportunities for us to consider these issues together as a church family. The Second Hour program after church invited us to look at some of the confessions that guide the Presbyterian Church (USA) alongside of scripture to hear God's word for us with regards to religion, race, and reconciliation. In addition, a group of members gathered on six Wednesday evenings in the fall to watch a live stream of the Penn Museum's Public Classroom series on "Science and Race". We also had an opportunity to confront and explore the idea of privilege through a board game led by Elise Hocking over brunch. Reformation Sunday brought Rev. Theresa Thames from Princeton University to our pulpit and Second Hour to speak with us and challenge us further in these conversations. All of these offerings asked us to look at difficult issues that are impacting our nation and individual lives through the eyes of our faith, to consider how we are involved with them, and to discuss what our call to be Christ's disciples means for our response.

In another effort to help us think about what Sunday has to do with Monday, we launched the new Articles of Faith program. While it is still building, it is a new opportunity for a small group to gather around specific articles that speak to an issue of faith and life. With a platform for online engagement through a Facebook group as well as in-person conversation and fellowship, we hope this will be a chance for members of the con-

gregation to build community, share ideas, and think together about how God would have us live out our daily lives rooted in the faith that we share. As we move into 2017, we give thanks for what has been and look forward to the new ways that we will be led to “grow in the grace and knowledge of our Lord and Savior Jesus Christ” together. (2 Peter 3:18)

*Margaret Poteet*



## *Flower Guild*

The Flower Guild, now in its third year, brings together seventeen dedicated members who work in teams to create the Sunday chancel arrangements and the special Easter and Christmas floral displays. The Flower Guild’s ministry is to bring the beauty of God’s world into our worship space.

Thanks go to all the church members and friends whose Flower Fund contributions make the Guild’s work possible. Sponsoring Sunday flowers and donating to the Christmas and Easter Flower funds provide members a meaningful way to remember loved ones, to celebrate family events or to honor special individuals and programs.

Special thanks go to Ken Lovett, our continuing source of creativity and expertise. Thanks also to these Flower Guild members whose enthusiasm and talents are greatly appreciated:

- |                   |                     |
|-------------------|---------------------|
| Sarah Alison-Kern | Jane Kaufman        |
| Mari Bernhagen    | Cathy McKinney      |
| Katie Connelly    | Sue Shuchat         |
| Sandy Connelly    | Barrett Stewart     |
| Joan Demme        | Mary Ann VanBlarcom |
| Barbara Frazier   | Susan White         |
| Linnea Johnson    | Suzan Willcox       |
| Sally Johnston    |                     |

We welcome new volunteers, and will be presenting another arranging workshop in the Spring which will be a great chance to get involved. For information, please contact Grace Stewart (glstewart1@verizon.net).

*Grace Stewart and Diane Cornely*

## *The Stewardship Committee—In the Cloud*

*“Since we are surrounded by so great a cloud of witnesses...” Hebrew 12:1*

Our 2017 stewardship campaign kicked off in September when we invited the congregation to help us develop the campaign theme by answering the question, “What one word comes to mind when you think of PCCH?” That ‘social experiment’ was the inspiration for the creation of visual word clouds that we used on all of the campaign materials. The more times a word is mentioned, the larger it shows up in the word cloud. Some of the largest words on the congregation’s word clouds were “music,” “community,” “worship,” and “inclusiveness.” Brian’s youth group’s word cloud contained their own unique set of phrases, like “mission trip,” “theology & pretzels,” “friends,” and “confirmation.” The children under Austin’s care said, “baptism,” “friends,” “cupcakes,” and other words. These word clouds graced the covers of church bulletins throughout October and were also featured on letterhead and the narrative budget mailer.

The elders and deacons held a letter-writing campaign with hand-written notes to all households, asking them to increase their pledge by 1% of their household income. That message was reinforced in all communications, both written and delivered from the pulpit by a different person/family during Stewardship Season. Commitment Sunday was November 13 with the ritual of bringing pledge cards forward at the end of the service followed by a celebratory pancake brunch. Pledges



continued to come in as late as February 2017 thanks to continued reminders to the congregation and a call campaign led by Mark Nottingham.

The 2017 total challenge pledge budget was \$650,000 (including mission dollars) and we're pleased to report that we exceeded our goal. At the time of this writing, we have received 197 pledges totaling \$666,000 (\$69,000 more than 2016 pledges). 92 were increased, 74 remained the same, 11 were decreased, and 20 were new. We still have 7 outstanding pledges of \$1,000 or more.

Thank you to everyone who helped to make this campaign a big success.

*Laurie Menyo and Dom Rebeck*

## *Investment Committee Report 2016*

The Investment Committee comprised of Harry Spaeth, Michael Elwell, Cindy Jarvis, Mark Nottingham, Matt Abernathy and John Lawton continued to faithfully oversee the Endowment Funds of our church. Our committee is responsible for investments that are managed by Merrill Lynch and PNC. The Endowment Committee recently terminated our relationship with the Presbyterian Foundation due to under-performance and transferred the Music and Arts Funds to Merrill Lynch.



The 2016 Endowment Funds provided an income of \$176,541 to support the operating budget.

\$48,000 of this money supported was needed to support the Preschool Budget. The Senior Adult Ministry Endowment fund provided \$103,686 of income to support the Senior Adult Ministry of the church. Anyone who is interested in learning more about the Investment Committee, please contact John Lawton at 215-527-5775. We meet four times a year on the fourth Monday after Quarter End to discuss performance and set strategic direction. The Committee is looking forward to bringing Brian DiDonato back onto the Committee for 2017.

*John Lawton*



## *Finance Committee and Treasurer's Report*

The Finance Committee and the Treasurer facilitate the adoption of the annual Operating Budget for PCCH. The Operating Budget is the financial roadmap for the church as we journey through the calendar year. Once the budget is set early in the year, the Finance Committee meets monthly with our accounting firm, Main Line Accounting, to review our progress. Also discussed at these meetings are the finances relating to the restricted funds, e.g., Senior Adult Ministry, Capital Campaign, building maintenance, and the Preschool. Cash flow management for the church is also reviewed and monitored to coordinate with the Investment Committee any draws that need to take place.

The Finance Committee's findings and recommendations are conveyed to Session at their monthly meetings for review and/or action when needed. You will see a financial summary updated regularly in the Church bulletin throughout the year, for both the Capital Campaign and the Operating Fund.

We are blessed to have our endowment invested for today and for the future of PCCH, but remember that the majority of the Operating Fund and the success of our budget throughout the year is dependent upon our Congregational Response and the annual pledges PCCH receives.

For 2016 we had a record year with pledge receipts which helped immensely to balance our stated budget and for us to be able to tithe for Mission. Thank you to all who kept up with your pledges! For 2017, we have had another banner year on the stated pledge front so please remember to keep those up to date and always feel free to pay any overdue pledged from any previous years. These are always kindly accepted.

If you have any questions, please contact any member of the Finance team: Harry Spaeth, Tom McClintic, Graeme Frazier, or Jim Walker. Thank you one and all for your dedication to stewardship for the Church.

*Tom McClintic and Harry Spaeth*

# *Strengthen the Foundation, Transform the Future*

## *Capital Campaign Update: As of December 31, 2016*

Original Capital Campaign Goal:	\$1,500,000
Total Amount Needed for Revised Campaign:	\$1,222,480
Total Amount Pledged:	\$1,225,889
Total Amount Needed for Campaign w/ Boiler System:	\$1,581,108
Pledge Receipts to Date:	\$1,165,594
Gifts Received to Date:	\$ 171,080
Total Sources of Funds:	\$1,336,674
Cash on Hand	\$ 31,681
Percentage of Pledges Received to Date:	95%
Amount of Pledges that have Not Been Received:	\$ 70,345
Total Campaign Tithes Amount for Mission YTD:	\$ 97,250

### **Phase 1 Projects Completed in 2013:**

- ❖ Architect and Consultant fees
- ❖ Repair of Sanctuary Ceiling
- ❖ Repair of Organ and Choir Room Floor
- ❖ Renovation of the Burleigh Cruikshank Chapel
- ❖ Renovation for new Handicap Accessible Restroom in Strouse
- ❖ Repair of the Chapel steps
- ❖ Youth Space Renovation in Strouse



### **Phase 2 Projects Completed in 2014 and 2015:**

- ❖ New Boiler System and Conversion (Phase 1 and 2)
- ❖ Installed New Energy Efficient windows (Harris/Offices/Kitchen/Melcher)
- ❖ Replace Gutters (Sanctuary and Strouse)

### **Phase 3 Projects Completed in 2015 and 2016:**

- ❖ Boiler Final Conversion and Control System\*
  - \*Approximate total for entire Boiler Replacement was \$412,000
- ❖ AC Replacement Systems for Offices
- ❖ Energy Efficient Re-Lamping for the Sanctuary and Widener
- ❖ Flagstone Repairs
- ❖ Driveway and Parking Lot Repairs
- ❖ New Refrigerator and Freezer for the Kitchen
- ❖ Painting of the steeple and exterior



### **Projects yet to be Undertaken Pending Further Receipt of Pledged Funds:**

- ❖ Widener Restroom Addition and Kitchen Renovations
- ❖ Replace Windows for Strouse Classrooms with Energy Efficient Windows
- ❖ Corridor Improvements/New Rear Covered Walkway/Steeple Roof Repair
- ❖ New Steinway Piano for Sanctuary/Landscaping and New Signage

# Presbyterian Church of Chestnut Hill

## Session Approved 2017 Budget

	2016 Budget	2016 Actual	2017 Budget
<b>Revenue</b>			
Congregational Response	\$703,522	\$718,010	\$747,558
Building Use and Other Revenue	\$111,400	\$115,859	\$111,400
	<u>\$814,922</u>	<u>\$833,869</u>	<u>\$858,958</u>
Draw Against Endowment Income			
Designated Draws	\$61,909	\$69,909	\$61,080
Other Draws	\$69,169	\$106,632	\$57,223
Total Endowment Draws	<u>\$131,078</u>	<u>\$176,541</u>	<u>\$120,162</u>
<b>Total Revenue</b>	<b><u>\$946,000</u></b>	<b><u>\$1,010,410</u></b>	<b><u>\$979,120</u></b>
<b>Expenses</b>			
Ordained Ministers	\$202,011	\$195,827	\$217,757
Lay Personnel Salaries & Benefits	\$290,464	\$291,070	\$300,066
Other Personnel	\$54,775	\$63,060	\$55,975
Personnel Total	<u>\$547,250</u>	<u>\$549,957</u>	<u>\$573,798</u>
Music and the Arts	\$11,400	\$11,388	\$11,400
Church Life	\$18,850	\$26,741	\$19,750
Christian Education	\$12,400	\$14,658	\$15,773
Administration	\$95,400	\$102,499	\$103,700
Buildings and Grounds	\$173,700	\$159,753	\$169,200
Mission	\$87,000	\$88,822	\$85,500
<b>Total Expenses</b>	<b><u>946,000</u></b>	<b><u>953,818</u></b>	<b><u>979,121</u></b>
Revenues in Excess of Expenses	\$0	\$56,592	(\$1)
less Draws to offset 2015 deficit		<u>(\$42,016)</u>	
2016 Surplus		\$14,576	
<b>Sr. Adult Ministry</b>			
Carry over previous year	\$15,817	\$15,817	\$15,817
Gifts/Grants	\$10,000	\$2,400	\$10,000
Other Income	\$11,000	\$32,089	\$11,000
Draw from SAM endowment	\$103,686	\$103,686	\$104,594
<b>Total Revenue</b>	<b><u>\$140,503</u></b>	<b><u>\$153,992</u></b>	<b><u>\$141,411</u></b>
<b>Expenses</b>			
Payroll & Expenses	\$114,220	\$118,966	\$117,579
Contribution to Church Overhead	\$15,000	\$15,000	\$15,000
<b>Total Expenses</b>	<b><u>\$129,220</u></b>	<b><u>\$133,966</u></b>	<b><u>\$132,579</u></b>
Revenues in Excess of Expenses	\$11,283	\$20,026	\$8,832

